

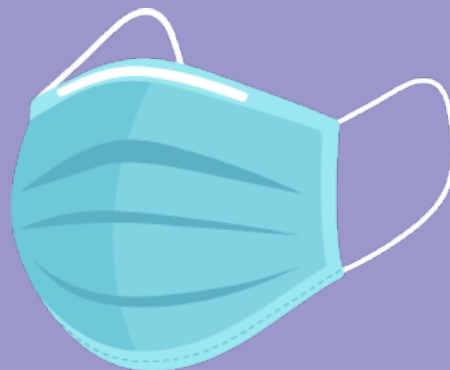
What Kind of Mask Should I Wear?

1. Cloth



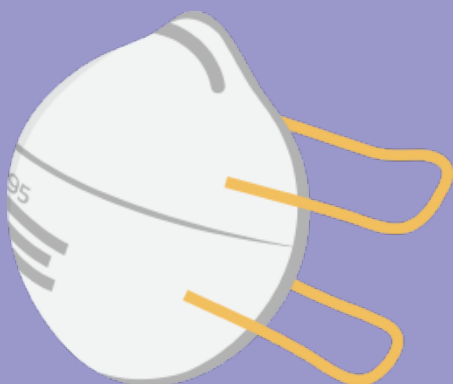
The CDC recommends these for the general public. Helps prevent people who may be sick from passing germs to others. Wash after every use.

2. Surgical



These are typically worn in hospitals and other sterile settings. Designed to block wearer from large droplets and prevent wearer from passing germs to others. Discard after use.

3. N95



The CDC recommends that these be reserved for healthcare workers. Helps form a seal around the face and filter airborne particles. Designed for one use only. Ask your manager before reusing.

4. Face Shields



These can be used as another barrier (along with masks) to help protect the wearer from larger particles when in close proximity of others. Wash after every use.